

Summary of Financial Results for 2Q of FY2024

(from April 1, 2023 to September 30, 2023)

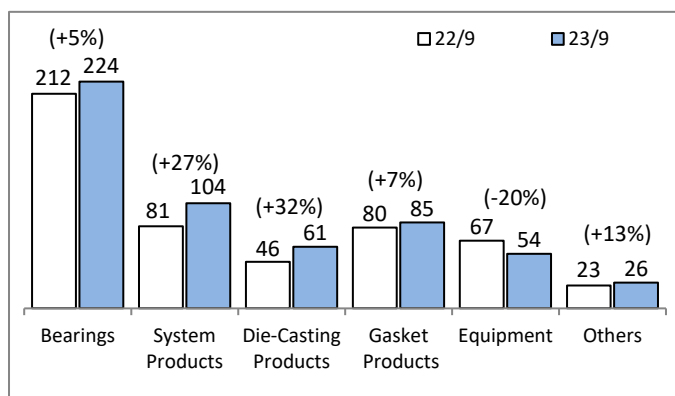
October 30, 2023
TAIHO KOGYO CO., LTD
(Code number: 6470)
(Million yen)

1. Consolidated Financial Results

	2022.4~2022.9		2023.4~2023.9		Increase/Decrease		2023.4~2024.3		FY2023/FY2024	
	Results	Profit rate(%)	Results	Profit rate(%)	Results	Rate of change	Forecast	Profit rate(%)	Increase/Decrease	Rate of change
Net Sales	51,179	-	55,558	-	4,379	8.6	114,000	-	8,838	8.4
Operating Income(Loss)	105	0.2	879	1.6	774	733.3	2,400	2.1	1,705	245.8
Ordinary Income(Loss)	759	1.5	1,570	2.8	810	106.7	2,200	1.9	988	81.6
Profit(Loss) Attributable to Owners of Parent	500	1.0	1,073	1.9	572	114.3	1,200	1.1	800	200.3
Foreign Exchange Rate	JPY/US\$	134	141	+7			130		-5	
	JPY/Euro	139	153	+14			140		-1	
Earnings per share(JPY)	17.35		37.23		19.87		41.66		27.80	
Return on equity	0.7%		1.6%		+0.9%		1.8%		1.2%	
Number of Consolidated Subsidiaries	14		14		0		14		0	

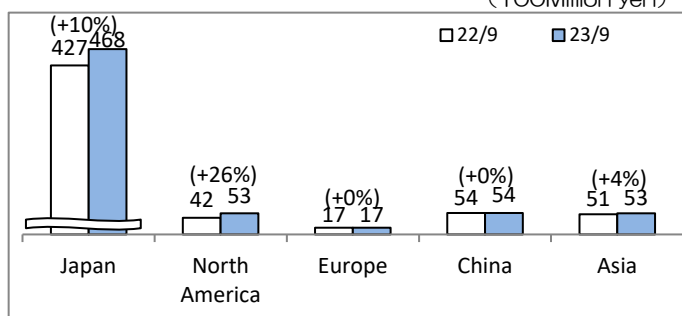
2. Summary of Sales

① Sales by products (100Million yen)



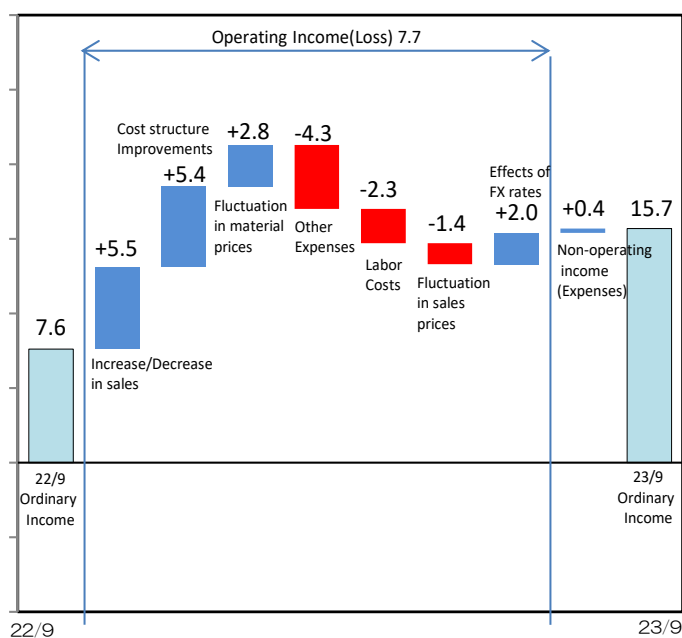
② Sales by region (Before elimination of intercompany sales)

(100Million yen)



3. Fluctuation factors of the operating/ordinary income

(100Million yen)



Ordinary Income(Loss) +8.1

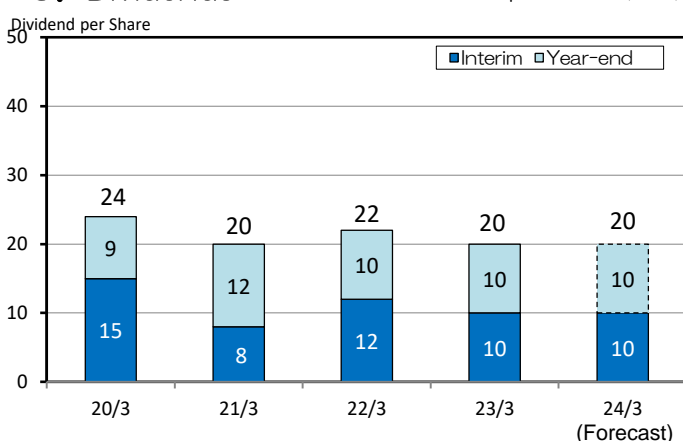
4. Consolidated Balance Sheet

(100Million yen)

Assets				Liabilities, Net assets			
	23/3	23/9	Change		23/3	23/9	Change
Current assets	588	618	30	Current liabilities	356	236	-120
Cash and deposits, securities	169	190	21	Trade payables	134	135	1
Trade receivables	231	242	11	Short-term borrowings	135	13	-122
Inventories	162	156	-5	Others	86	87	0
Others	25	27	2	Non-current liabilities	110	239	128
				Long-term borrowings	91	218	127
				Others	19	20	1
				(Total liabilities)	466	475	8
Non-current assets	549	563	14	Shareholders' equity	623	631	7
Property, plant and equipment	451	454	2	Total accumulated other comprehensive income	41	67	26
Intangible assets	16	16	0	Share acquisition rights	1	1	0
Investments and other assets	80	92	11	Non-controlling interests	5	6	0
				(Total net assets)	670	706	35
	1,137	1,181	44		1,137	1,181	44

5. Dividends

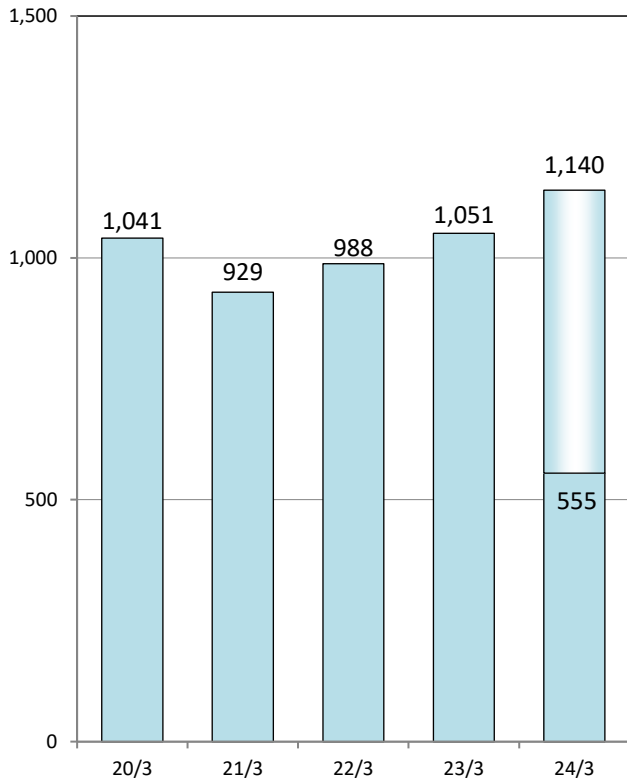
Dividend per Share (JPY)



6. Financial Results

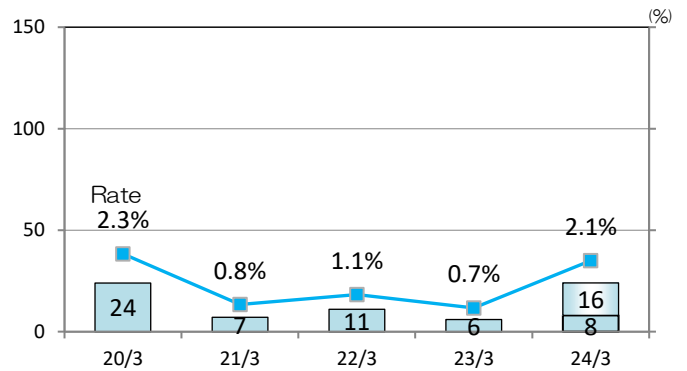
(1) Net Sales

(100Million yen)



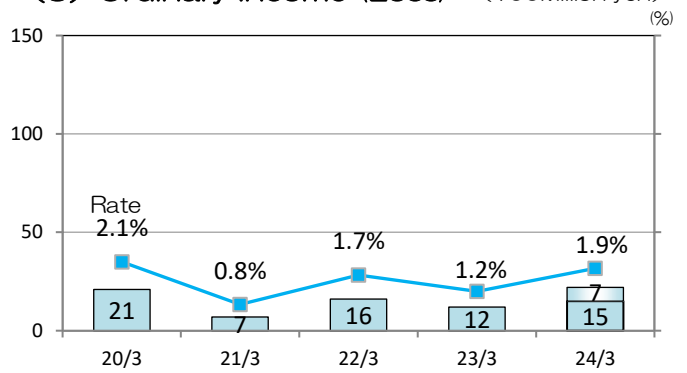
(2) Operating Income (Loss)

(100Million yen)



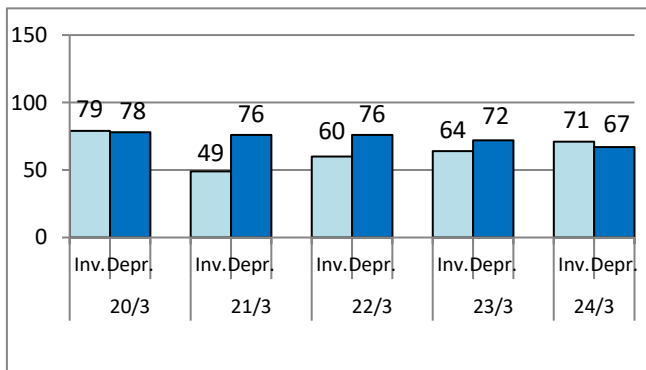
(3) Ordinary Income (Loss)

(100Million yen)



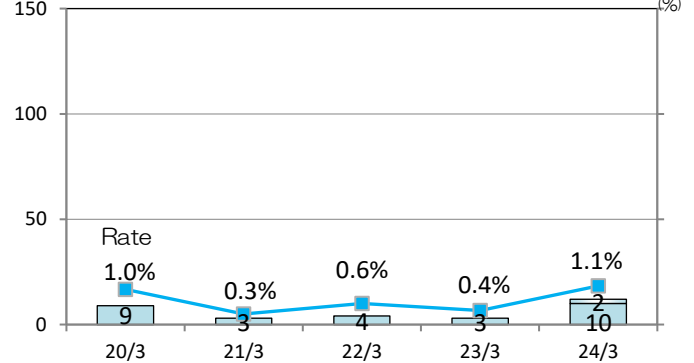
7. Capital Investment and Depreciation

(100Million yen)



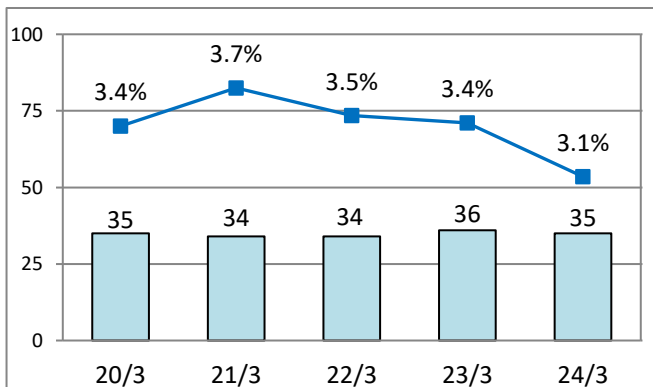
(4) Profit(Loss) Attributable to Owners of Parent

(100Million yen)



8. Research and Development Expenditure

(100Million yen)



9. Segment Information

(100Million yen)

	2022.4~ 2022.9		2023.4~ 2023.9		Increase/ Decrease	
	Net Sales	Operating Income	Net Sales	Operating Income	Net Sales	Operating Income
Automotive Parts	443	22	499	29	56	6
Equipment	67	5	55	6	-12	0
Others	0	0	0	-0	0	-0
Common costs(*)	-	-27	-	-27	-	0
Total	511	1	555	8	43	7

* Common costs are principally general administrative expenses not attributable to reporting segments.